



GROWING OUR IMPACT

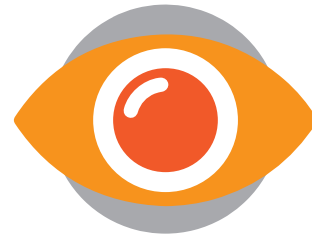
2017-2018 REPORT





OUR MISSION

Prepare leaders with ethical values to contribute to sustainable development and to construct a prosperous and just society.



OUR VISION

Our actions are mission-driven to alleviate poverty, promote social justice and build a future where our communities achieve sustainable and shared prosperity.

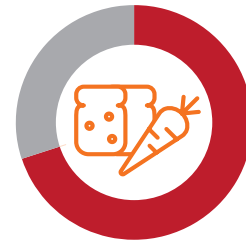
VIBRANT, SUSTAINABLE RURAL AREAS ARE ESSENTIAL TO THE FUTURE OF HUMANKIND



80% of people living in extreme poverty live in rural areas of the developing world



60% of the world's rural people are employed in agriculture



70% of our global food supply is currently produced by smallholder farmers in rural regions of the developing world

Sources: United Nations (2017), Food and Agriculture Organization of the UN (2015)

EARTH UNIVERSITY IS UNIQUELY POSITIONED TO PLAY A LEADING ROLE IN THIS GLOBAL EFFORT

Cover: EARTH University alum Reginald Cean ('11, Haiti) harnesses his EARTH education to generate sustainable change in Haiti – including establishing an agricultural school with Partners in Health.

“When I returned to Haiti, I took to heart that I can be the difference in my country. I aimed to do that by creating the school and other projects, and I have seen results. Wherever I travel for work, I seek out the things that are functioning well and challenge myself to bring those ideas back to Haiti. ”

- Reginald Cean ('11, Haiti)

A MESSAGE FROM OUR PRESIDENT AND BOARD CHAIR

Dear Friends,

These two years have been truly momentous. We had the first ever transition in the Presidency of the University. We also undertook a thoughtful review and planning process for EARTH's future and have recently started its implementation. It is a pleasure to share with you our strategy for 2018-2022, developed in consultation with the entire EARTH community – our faculty, students, staff, Boards, leadership team and close friends and allies in the US, Europe, Africa, Latin America and the Caribbean.

Over the course of this process, we reaffirmed that EARTH's mission and vision continue to be as relevant today as they were when the University was founded. After 30 years, EARTH has become an increasingly global institution with a strong commitment to advancing solutions at the local community level. Building on this strong foundation, we are convinced that EARTH can do more to grow its contribution in a challenging and dynamic world.

Our 2022 Strategic Plan binds our strengths together with our aspirations and dreams to help ensuring the vibrancy and sustainability of rural areas is essential for the future of humankind. It charts the path for EARTH to grow its impact in several ways:

- **Academic Program:** We are deepening and strengthening our academic model to ensure graduates have the knowledge, values, skills and attitudes required to be effective global leaders.

- **Alumni Relations:** We are strengthening our relationships with alumni to expand the collective impact of the 2,329 graduates who are acting as change agents across 49 different countries.
- **EARTH Futures:** We are launching a new impact platform that contributes to the transformation of rural areas across the developing world.

We are also taking steps to further enhance the financial model that underpins our work and our sustainability for the long term. Taken together and advanced with a vibrant network of likeminded partners, supporters and allies, we feel that these ambitious efforts set the course for the University to increase its impact exponentially into the future.

We thank all of you who participated in the process of crafting our future strategy and to all who have supported EARTH in the past. We look forward to our sustained collaboration with you and with many new partners as we seek to positively impact the lives of millions of rural people throughout the developing world.

Sincerely,



Tim Solso,
Board Chair



Arturo Condo,
EARTH University President



“Ensuring the vibrancy and sustainability of rural areas is essential for the future of humankind.”

Tim Solso and Arturo Condo

WE INSPIRE, PREPARE AND SUPPORT ENLIGHTENED AND EFFECTIVE LEADERS FOR RURAL AREAS

Each year, we actively recruit more than 100 young leaders to join our highly-experiential education program in agricultural sciences and natural resources management. During their four years at EARTH, students develop critical skills and attitudes to be effective leaders of positive change and prosperity through:

Hands-on learning

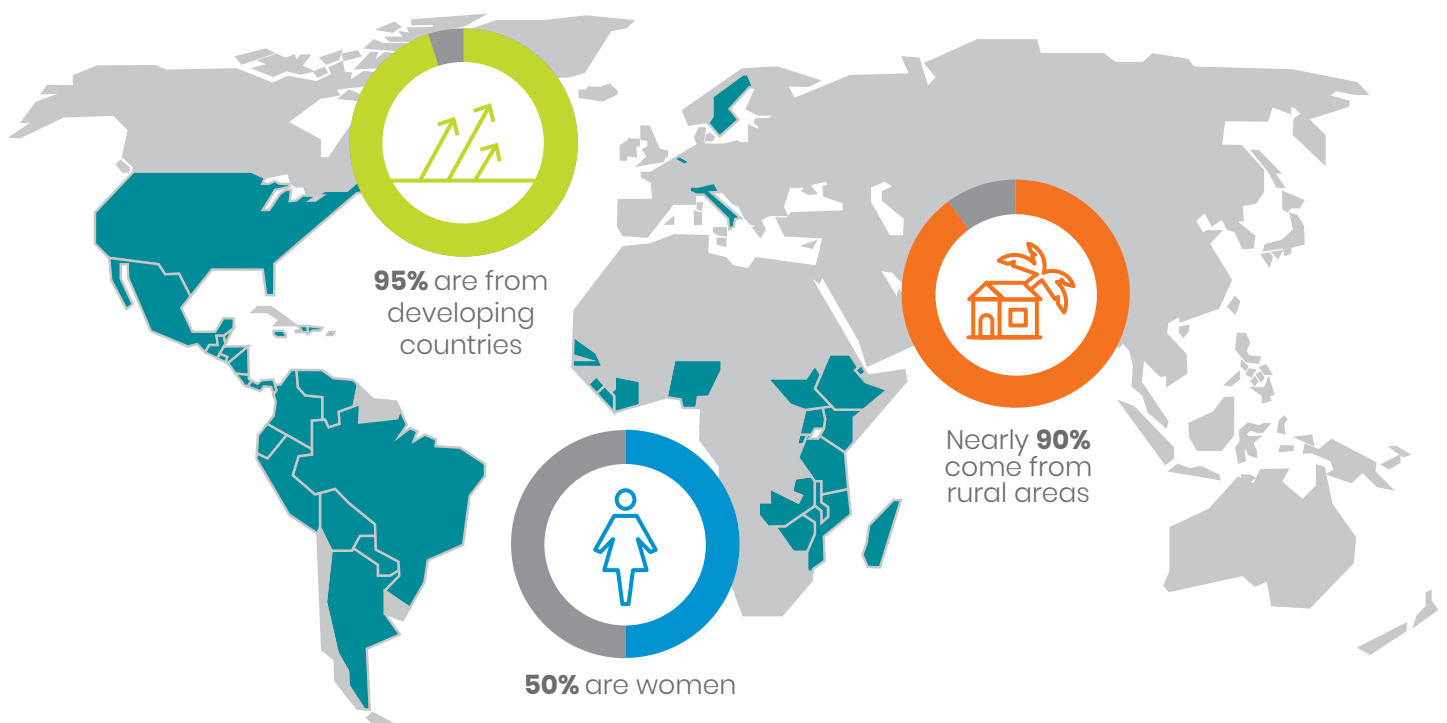
75% of all academic learning occurs through hands-on training and solving problems relevant to the sustainability challenges of today and tomorrow.

Community engagement

Students complete more than 350 hours of community work and training, and spend seven weeks living in rural communities near our campus in Guanacaste.

Entrepreneurial innovation

All students receive a loan to start and operate a real business during their first two years at EARTH.



Thanks to our generous donor community, we admit students from rural areas based on their leadership potential and a commitment to community, regardless of their financial capacity.

85% of students graduate in 4 or 5 years, a significantly higher graduation rate than most universities around the world.

Despite inconsistent quality in secondary education in the regions where we recruit our students, our robust support services and student-centered educational model ensure all students can thrive.



Debby Meléndez ('21, Costa Rica) & Luisa González ('21, Guatemala)

TOGETHER, WE CAN GROW THE IMPACT OF OUR ACADEMIC PROGRAM

A GLIMPSE INTO OUR 2018–2022 STRATEGIC GOALS

Our educational model is at the core of what we do. As we look to the future, we plan to deepen and strengthen our model to ensure graduates have the knowledge, values, skills and attitudes required to be effective global leaders. To this end, over the next five years we will:

- **Enhance our curriculum:** We are taking a comprehensive look at our program to introduce new content and innovations that ensure graduates are equipped to lead large scale, transformational change, based on their grassroots experience.
- **Enhance our English program:** With graduates increasingly seeking global impact and influence, we will boost English in our curriculum to build proficiency.
- **Modernize technology:** We will upgrade our learning spaces and field technology so that students are well-versed in cutting-edge solutions that can help rural areas prosper.
- **Maintain and increase the diversity of our student body:** We plan to sustain gender parity and further cultivate the rich cultural and socio-economic diversity of our student body.

“ Social entrepreneurship is important in solving global challenges. For agricultural students to be strong transformational leaders, they must possess and show personal entrepreneurial competencies. ”

- Mastercard Foundation Scholar, Respect Musiyiwa ('20, Zimbabwe)



I.T. 4 SOCIAL IMPACT

For their Entrepreneurial Project, a team of Mastercard Foundation Scholars – Respect Musiyiwa ('20, Zimbabwe), Forget Shareka (19, Zimbabwe) and Precious Nemutenzi ('20, Zimbabwe) – started I.T. 4 Social Impact, which develops free mobile phone applications to help small-scale farmers solve everyday challenges. The apps provide guidance on sustainable farming, harvesting and post-harvest practices, as well as

information on financing and commercializing crops. With their apps already being used by farmers in both Costa Rica and Zimbabwe, these ambitious students are seeing the potential to scale the project. Their mission? To achieve food security, eradicate hunger and poverty, build climate resilience and contribute to the achievement of the Sustainable Development Goals.

SUPPORTING OUR ALUMNI ALONG A PATH OF GLOBAL LEADERSHIP



2,329 alumni from 49 countries

In recent surveys, employers and community members largely recognize EARTH alumni for their strong leadership skills, solid technical knowledge and their commitment to environmental sustainability, social justice and values.



80% of alumni are back in their home countries catalyzing positive change.

Their areas of impact are described in the table below:



Nearly 25% of our graduates operate their own or a family business.

70% of those graduates have created new jobs, driving economic growth and prosperity in their regions.

“ You can't have a sustainable business if you do not include the community...that means that you are recirculating the money that you are creating in your local economy and creating wealth by doing that.

”

– Pablo Céspedes ('94, Costa Rica)



EARTH graduates and husband-and-wife team, Ana Hazel Pérez ('94, Costa Rica) and Pablo Céspedes ('94, Costa Rica) own the agro-tourism project La Anita, in Upala, Costa Rica. In addition to having 13 cabins as part of their tourism project, they now process and export premium chocolate from the cacao grown and harvested organically on their farm and from

growers in the community. La Anita, which employs eleven permanent staff, operates under four pillars: sustainable agriculture, tourism, community and ecological sustainability. At EARTH, Ana and Pablo gained more than knowledge of agriculture or how to run a business. As Ana says, *"I gained a way of life, a way of thinking."*



“ I have seen people having more production and being able to send their children to school, I have seen smiles on farmers' faces when they have their harvest... I am contributing to something to help my country do better. ”

– Amos Montreuil Jean (13, Haiti)

After graduating from EARTH University in 2013, Amos Montreuil Jean did what few in his country expected of any young Haitian who studied abroad – he returned to Haiti. Today he is a Rural Resilience

Program Manager with Mercy Corps, working with agricultural communities in Ouest department to build their organizational, technical and financial capacity.

WITH YOUR SUPPORT, WE CAN INCREASE OUR IMPACT THROUGH STRENGTHENED ALUMNI RELATIONS

A GLIMPSE INTO OUR 2018–2022 STRATEGIC GOALS

Our alumni are our strongest link to our next generation of students and to rural communities throughout developing regions. To strengthen our connection with our alumni and expand their individual and collective impact, over the next five years we will:

- **Boost communications:** We are investing in our Alumni Affairs office and alumni organizations to improve communications with and between alumni.
- **Increase support:** We will expand continued education efforts and foster connections with EARTH networks and opportunities.
- **Engage graduates:** We aim to involve our alumni in rural impact projects, admissions, fundraising, continuing education and/or other university programs and projects.

(Photos: Lynn Hoffman-Brouse)

EARTH FUTURES

A GLOBAL PLATFORM TO ADVANCE LEADERSHIP FOR RURAL INNOVATION



Lourdes Arellano ('20, Guatemala)

In 2018, EARTH decided to create EARTH Futures as a global platform to grow the University's impact through three core programs:

1. Education for Leadership

To scale the preparation of ethical leaders for rural areas, we are working with partners to advance transformational leadership education strategies inspired by the EARTH model at educational institutions across Latin America and Africa.

For more than a decade, we have partnered with the African-led network of universities, RUFORUM, to support innovation in higher agricultural education on the African continent. In 2017 and 2018, we held

workshops and exchanged experiences with Gulu and Egerton Universities on entrepreneurship, experiential education and community engagement. In October 2018, EARTH Futures staff and the RUFORUM Secretariat met for two days in Kampala to brainstorm and plan avenues to scale the impact of the partnership.

“As long as we equate learning to sitting at a desk and listening... Africa will continue to produce degree-holders and not problem-solvers... but what if we develop Africa-wide degree programs that adapt the EARTH University approach by equipping our young people to learn how to solve African problems in an innovative manner?” - Catherine Mloza-Banda, RUFORUM journalist.

EARTH also has a strong history of supporting technical and vocational institutions. In 2018, EARTH partnered with the Escuela Nacional Central de Agricultura (ENCA) in Guatemala to strengthen its programs. ENCA has provided more students to EARTH than any other school and is currently led by an EARTH graduate. In 2018, EARTH supported ENCA in teacher training and curriculum revision to ensure that the school continues to provide Guatemalan society with first-class leadership training and technical expertise.

2. Developing Solutions

Building upon our experience working with rural communities, we develop innovative solutions to pressing challenges facing rural areas. EARTH University’s Guacimo campus is located in Costa Rica’s Atlantic region, where cocoa production is important for rural livelihoods and where some of the country’s highest rates of poverty and also abundant natural resources are concentrated. Through EARTH Futures and our faculty, efforts in 2017 and 2018 focused on two core initiatives:

1. Improving Livelihoods for Rural Cocoa Producers & Entrepreneurs

In cooperation with close allies, in 2017 EARTH helped create a new platform, “Plataforma Cacao Caribe,” to support the exchange of best practices and the development of collective strategies for the greater sustainability of the cocoa sector and its members. The

Platform brings together representatives from more than 60% of Costa Rica’s cocoa production, including producer organizations, six governmental entities and other actors in the sector. That currently represents more than 60% of Costa Rica’s cocoa production. In 2018, EARTH and the Platform were invited to contribute to the formulation of Costa Rica’s National Cocoa Plan.

2. Empowering Women in the Cocoa Value Chain

In partnership with the International Center for Research on Women (ICRW) and with support from the Inter-American Development Bank, EARTH developed a model to strengthen women’s economic empowerment as a means of improving rural livelihoods and sustainable management practices. In 2017–2018, the model was applied with Amazilias, a women-led cocoa enterprise in Costa Rica. PROCOMER (Costa Rica’s export agency) provided complementary services and, in November 2018, Amazilias was awarded the “Esencial Costa Rica” certification as part of a national branding strategy for sustainably produced products.

3. Accelerating and Expanding Collaboration for Impact

Collaboration among organizations working to promote leadership and innovation in rural areas is critical to achieving change at the scale needed. EARTH Futures is working with partners from across the globe to co-create, test and scale effective leadership education approaches and innovative solutions that can advance vibrant, sustainable rural areas.

In 2017, EARTH and the Costa Rica-United States Foundation for Cooperation (CRUSA) formed a strategic alliance to foster innovative sustainable development solutions that can improve rural livelihoods in Costa Rica and to scale and share these solutions globally through the launch of EARTH Futures. As part of this joint effort, CRUSA is investing \$800,000 over four years in EARTH Futures. These funds will be invested to design new approaches and solutions that accelerate sustainable development in Costa Rica and also help to solve rural challenges that are global in scope.

FUNDING OUR GROWTH

EARTH UNIVERSITY OPERATIONS

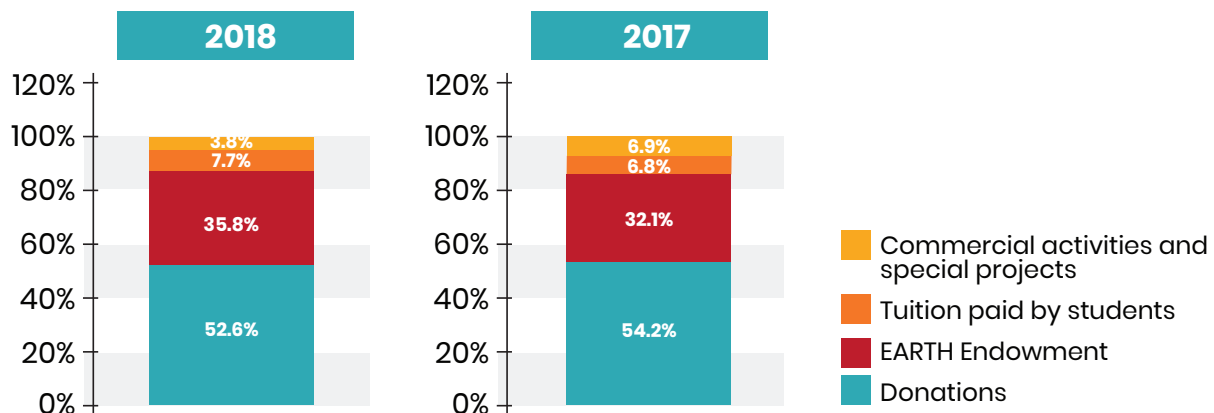
Careful stewardship of resources along with growth in charitable giving and our commercial activities are contributing to a healthy financial picture that enables the fulfillment of our mission.

EARTH UNIVERSITY OPERATIONAL BUDGET (IN THOUSANDS OF DOLLARS)

| FUND SOURCES | 2018 | 2017 |
|--|-------------------|-------------------|
| Tuition payments and donations | \$10,931.6 | \$11,033.1 |
| Other income (special projects, commercial activities) | \$1,086.6 | \$1,246.8 |
| EARTH Endowment | \$6,095.1 | \$5,816.6 |
| TOTAL | \$18,113.3 | \$18,096.5 |

| EXPENSES | 2018 | 2017 |
|--|-------------------|-------------------|
| Compensation and benefits for administrative and operational personnel | \$6,276.1 | \$6,326.8 |
| Compensation and benefits for faculty and senior administrative staff | \$4,536.6 | \$4,314.4 |
| Operational expenses | \$4,869.7 | \$5,097.2 |
| Equipment investment and replacement | \$515 | \$600 |
| Contingencies | \$54.8 | \$32 |
| Fundraising | \$1,861.1 | \$1,726.1 |
| TOTAL | \$18,113.3 | \$18,096.5 |

HOW OUR BUDGET IS FINANCED



2018 & 2017 FINANCIAL RESULTS

EARTH UNIVERSITY FOUNDATION

From its headquarters in Atlanta, Georgia, the EARTH University Foundation – a registered 501(c)(3) public charity – provides vital funding for EARTH’s educational mission, programs and projects thanks to generous gifts from a global community of supporters.

STATEMENT OF FINANCIAL POSITION DECEMBER 31, 2018 AND 2017

| ASSETS | 2018 | 2017 |
|---------------------------------|---------------------|---------------------|
| Cash and Cash Equivalents | \$2,332,991 | \$2,709,145 |
| Pledge Receivable, net | \$4,643,054 | \$6,011,173 |
| Endowment and Other Investments | \$65,796,979 | \$69,039,835 |
| Other Assets | \$605,997 | \$567,085 |
| TOTAL ASSETS | \$73,379,021 | \$78,327,238 |

| LIABILITIES AND NET ASSETS | 2018 | 2017 |
|---|---------------------|---------------------|
| Liabilities | \$314,820 | \$307,519 |
| Net Assets | \$73,064,201 | \$78,019,719 |
| TOTAL LIABILITIES AND NET ASSETS | \$73,379,021 | \$78,327,238 |

STATEMENT OF FUNCTIONAL EXPENSES YEAR ENDED DECEMBER 31, 2018 AND 2017

| | 2018 | | | |
|-----------------------------|------------------|--------------------|------------------|--------------------|
| | Fundraising | Programs | Administrative | Total Expenses |
| Scholarships | - | \$5,327,772 | - | \$5,327,772 |
| Project and Program Expense | - | \$2,156,060 | - | \$2,156,060 |
| Foundation Operations | \$538,998 | \$460,836 | \$539,351 | \$1,539,185 |
| TOTAL EXPENSES | \$538,998 | \$7,944,668 | \$539,351 | \$9,023,017 |

| | 2017 | | | |
|-----------------------------|------------------|--------------------|------------------|--------------------|
| | Fundraising | Programs | Administrative | Total Expenses |
| Scholarships | - | \$3,372,831 | - | \$3,372,831 |
| Project and Program Expense | - | \$2,342,012 | - | \$2,342,012 |
| Foundation Operations | \$581,642 | \$581,621 | \$512,864 | \$1,676,127 |
| TOTAL EXPENSES | \$581,642 | \$6,296,464 | \$512,864 | \$7,390,970 |

OUR DONORS

We recognize and appreciate the generous support of the following donors whose gifts were received in 2017 and 2018, and those whose lifetime giving exceeds US\$1 million. These individuals, businesses, foundations, governments and international organizations make the continued fulfillment of our mission possible.

Lifetime Gifts >\$1,000,000

Anonymous (1)
A.G. Leventis Foundation
Agencia Sueca de Cooperación Internacional
BAC San José S.A.
Banco Interamericano de Desarrollo - Fondo Japonés
Jane and Dameron Black III
Fundación CRUSA
The Cummins Foundation
U.S. Department of Energy
Instituto para Formación y Aprovechamiento de Recursos Humanos, Panamá
W. K. Kellogg Foundation
Mastercard Foundation
Ministerio de Economía y Finanzas, Panamá
Moore Family Foundation
Katherine John Murphy Foundation
NORAD
Karin and Mark Ohrstrom
Onward & Upward Initiative A Charitable Trust
Open Society Foundations
Fundación Simón I. Patiño
Porticus Latin America
SENECYT
Denny† and Tim Solso
Standard Fruit Company
USAID-ASHA
Wege Foundation
WEM Foundation

\$10M+

W. K. Kellogg Foundation '17

\$5,000,000-\$9,999,999

W. K. Kellogg Foundation '18
Mastercard Foundation '18

\$1,000,000-\$4,999,999

Anonymous '17
SENECYT (Globo Común Ecuador) '18
Mastercard Foundation '17

\$250,000 - \$999,999

Anonymous '18
Anne H. Bass '17
The Cummins Foundation '17, '18
Fundación CRUSA '17
Fundación Simón I. Patiño '17
SENECYT (Globo Común Ecuador) '17
Kalsec, Inc. '18
USAID-ASHA '17, '18
WEM Foundation '18

“ *The investment in the education of young people in sustainable agriculture who are from [the Galapagos Islands] is my way of making a long-term commitment to the well-being of both the communities and the fragile ecosystem in which they live. I also do it to assure my son Seren inherits a beautiful and thriving world in which to live.* ”

– Samantha Bass, Donor

\$100,000 - \$249,999

Anonymous '18
A.G. Leventis Foundation '17, '18
Banco Davivienda (Costa Rica) S.A. '17

Jane and Dameron Black III '18
Jean Blackwell and Kimberly Williams '18
Norma Buchman '17
The Coca-Cola Foundation '17, '18
The Edward Colston Foundation '18
The Diana Davis Spencer Foundation '17, '18
Dentons '17
Fundación Simón I. Patiño '18
Glassybaby '18
Hoffman-Brouse Foundation '17
Karen and Robert Kustel '17, '18
José Roberto Marinho '17
The Martin Agency '17
Ministry of Education, Youth, Sports and Culture, Belize '17, '18

Ministerio de Educación Superior, Ciencia y Tecnología, República Dominicana '18
Moore Family Foundation '17
Katherine John Murphy Foundation '17
Khan Nedd '18
Karin and Mark Ohrstrom '17
Charles R. O'Malley Charitable Lead Trust '17, '18
Variedades del Trópico Húmedo '17
Wege Foundation '17, '18
Jeannie Wright '18

\$50,000 - \$99,999

Alcaldía de Machala '17
The Honorable Anne Slaughter
Andrew and Joe Andrew '18
Claire Lewis Arnold and H. Ross Arnold III '18
BAC San José S.A. '17
Samantha Bass '18
The Butler Foundation '17
Marta de Cantú and César Cantú Benavides '17
Hoffman-Brouse Foundation '18
Instituto para Formación y Aprovechamiento de Recursos Humanos, Panamá '17, '18
Kalsec, Inc. '17
Gerald A. and Karen A. Kolschowsky Foundation, Inc. '17, '18



“ We believe it’s our responsibility to contribute to the development of the community where we work... and in giving opportunities to young and talented men and women to become successful professionals, especially those who do not have the economic resources to access quality higher education. ”

Juan Manuel Sánchez, Board Chair of Ingenio Taboga, Costa Rica. The company’s scholarship support has made it possible for Andrey Vargas (’19, Costa Rica) to study at EARTH.

José Roberto Marinho '18
 Catherine and Mark McGahan '18
 Adrienne Meisel and Rand Sparling '17
 Moore Family Foundation '18
 Katherine John Murphy Foundation '18
 Karin and Mark Ohrstrom '18
 Open Society Foundations '17

\$25,000 - \$49,999

Anonymous '17
 Anonymous '17, '18
 Americana Foundation '17, '18
 The Honorable Anne Slaughter
 Andrew and Joe Andrew '17
 Claire Lewis Arnold and
 H. Ross Arnold III '17
 Auto Mercado S.A. '17
 Azucarera El Viejo '18
 Banco Davivienda (Costa Rica) S.A. '18
 Tracey Robertson-Carter and
 Christopher Carter '18
 The Edward Colston Foundation '17
 Ford Motor Company Fund '18
 Barbara and Ivor Freeman '17 Frieda's
 Specialty Produce '17

Center for Systemic Change (Kellogg)
 of Grand Rapids Community
 Foundation '18
 Ingenio Taboga '17
 The Isaf Family Foundation '18
 LB Foreningen '17, '18
 Mammel Foundation '17
 Catherine and Mark McGahan '17
 Julie and Charles† Merrill, Jr. '18
 George L. Ohrstrom Jr. Foundation '17, '18
 Sally and Ken Ohrstrom '17, '18
 Stumptown Coffee Roasters '18
 Kirstie and David Timar '17, '18
 Linda and Richard Tsoumas '17, '18
 Variedades del Trópico Húmedo '18

\$15,000 - \$24,999

Anonymous '17
 Anonymous '18
 Ana Regina Aguirre De Riojas
 Sandra and Delbert Bland,
 Bland Farms '17
 The BOMA Project '17
 Magalen Bryant '17
 Kathleen and Douglas Colson '17

Duwest '17
 Chris and Herb Fluharty '17, '18
 Jessie Harris and
 George Cunningham '18
 Dianne and Ron Hoge '17
 Ingenio Taboga '18
 Ann Kerr '18
 Linda and William McQuillan '17
 Pat and Bobby Moser '17
 Scotiabank '17, '18
 Kat Taylor and Tom Steyer '17
 The Trio Foundation of St. Louis '17, '18
 U.S. Embassy - San José, Costa Rica '18
 Edna Wardlaw Charitable Trust '18
 Gertrude and William C. Wardlaw
 Fund '17

\$10,000 - \$14,999

Anonymous '17
 Ana Regina Aguirre De Riojas '17
 Erika Gonzalez- Akre and Thomas Akre '18
 Diane and Kent Alexander '17, '18
 Elyse and Joshua Arnow '17
 Kathleen S. Brooks Family Foundation '18



Central Azucarero de Alanje, S.A. '18
 Corrugados del Atlántico '17
 Fundación Enlasa '18
 Fundación Poligrow '18
 Porticus Latin America '17, '18
 Elma Goduto and Tim Conlon '17
 Jessie Harris and George Cunningham '17
 Journey Charitable Foundation '17, '18
 Alan Kelso Machado '18
 Ann Kerr '17
 Mammel Foundation '18
 Osaël Maroto Martínez '17, '18
 Adrienne Meisel and Rand Sparling '18
 Starr Moore and James Starr Moore
 Memorial Foundation '17
 The Sustainability Laboratory Inc. '17, '18
 Diana Wege '17, '18
 Jeannie Wright '17

\$5,000 – \$9,999

Anonymous '17
 Accenture Costa Rica '18
 Ana Regina Aguirre De Riojas
 Ray C. Anderson Foundation '17
 Auto Mercado S.A. '18
 Grupo Electrotécnica '18
 AutoStar '17
 Beca Semilla Graduados Guatemala '17
 Micki and Michael Besancon '18
 Julie and Jerry Bonner '17
 Kathleen S. Brooks Family Foundation '17
 John Bryant '17, '18
 Celeste and Leon Clark '18
 Leonor Gutiérrez Fernández and
 Arturo Condo '18
 Corrugados del Atlántico '18
 Follow Your Heart '17
 Frieda's Specialty Produce '18
 Duvall and J. Rex Fuqua '17, '18
 Erika Gonzalez-Akre and Thomas Akre '17
 Dianne and Ron Hoge '18
 Fred Keller '18
 Therus Kolff '17
 Gerry Ohrstrom '17
 Will Paradise '18
 Sharon Pauli '17
 Susan Z. Ritz, Larsen Fund '17
 Joanne and Garth Rogers '17
 Seaboard Overseas and Trading Group
 in partnership with Interra
 International '17, '18

Sharon Sherrard '18
 Kay Betts and John Sibley '17
 Rebecca Wood '17

\$2,500–\$4,999

Anonymous '18
 Accenture Costa Rica '17
 The Benevity Community Impact Fund '18
 Mark Betts '17
 Jane and Dameron Black III '17
 Sandra and Delbert Bland, Bland Farms '18
 Marilyn and Allan Brown '17
 Leonor Gutiérrez Fernández and
 Arturo Condo '17
 Jim Davidson '17
 Danilo Alejandro Flores Bianchi '17
 Barbara and Ivor Freeman '18
 Laura Frey and Erico Gomes '17, '18
 Dénisse Belén Gurdián Reyes '17
 Helene Harding and Patrick Briggs '17, '18
 Debra and Douglas Highsmith,
 Dorfman-Pacific Company, Inc. '17, '18
 Christine and Jon Hoek '17, '18
 Roya and Bahman Irvani '17
 The Isaf Family Foundation '17
 Bobbo Jetmundsen '17
 Mynor David Maldonado Mazariegos '17
 Julie and Charles† Merrill, Jr. '17
 Carlos Miller Kekeisen '18
 Sharon Pauli '18
 Faith Vrugink and Víctor Sánchez '18
 Fraternal Vila Girón '18
 Jane Smith Turner Foundation '17
 Vorys, Sater, Seymour and Pease '17

\$1,000–\$2,499

Abbott '18
 Abonos del Pacífico, S.A. '17
 Beca Semilla Graduados Guatemala '18
 Micki and Michael Besancon '17
 Black Dog Foundation '17, '18
 Jean Blackwell and Kimberly Williams '17
 Lucinda Bunnan '18
 Kristina and Michael Caplin '18
 Diane and Richard Clark '17, '18
 Louise and W. Carey Crane '17, '18
 Linda and William Dietel '17
 James Duncan, Jr. '17, '18
 Wendy Druce and Hugh Durden '17, '18
 Janet Eastridge '17, '18

Empresa Comercial del Pacífico S.A. '17, '18
 Dara and Alan Fairgrievies '17, '18
 Alison and G. Richard Fletcher† '17
 Pam and Rick Foster '17
 Jane Lipman and Bob Goodman '17
 Caron and Wilson Gordon III '18
 Nan and Rawson Haverty, Jr. '17
 Bobbo Jetmundsen '18
 Julia Jitkoff '18
 F. Martin and Dorothy A. Johnson
 Family Fund '17
 Louise and Samuel Kaymen '18
 Gina and Rich Kelley '17, '18
 Peggy and Larry Lord '17
 Louise and David Lutton '17, '18
 Malaika Maphalala '18
 Mary and Wesley Maurer '17, '18
 Lou Ann and Russell† Mawby '17
 Lauren and Thomas McGahan '17
 Hutham Olayan '17
 Ramón A. González Quirós '18
 Mauree Jane and Mark Perry '17
 Javier Plochanski Berger '17
 Manuel Ramírez Umaña '17, '18
 Kathy and Billy Rayner '17
 Meridith Rentz and Dean Baker '18
 Margot Larsen Ritz, Larsen Fund '17
 Susan Z. Ritz, Larsen Fund,
 Ritz Family Foundation '18
 Hannah Rusch and Didier Bolaños
 González '17
 Faith Vrugink and Víctor Sanchez '17
 Jeanine and Guy Saperstein '17, '18
 Margaret and Michael Sherraden '18
 Wendy Judy and Daniel Sherrard '17, '18
 Cary and Jack Sibley '17, '18
 Kay Betts and John Sibley '18
 Lisa and Charles Siegel '17
 Judy and Rick Smith '18
 Tim Statler '17, '18
 Stephanie and Robert Sweel '17, '18
 Theresa Fulton and Steven Tanksley '18
 Robert Van Den Brink '17, '18
 Susan and Richard Vander Veen III '17
 Amy and Andrew Vaughn '18
 Michaela Walsh, Aiden Parker and
 Grayson Everett '18
 Margaret and Terry Wittenberg '17, '18
 Randi S. N. Yoder and Michael
 J. Henley '17, '18

OUR INTERNSHIP HOSTS

We thank the following corporations and institutions around the world who hosted our third-year students as interns in 2017 and 2018. The internship helps our students build critical leadership skills and networks while deepening their knowledge and giving them the opportunity to apply their EARTH education in a professional setting.

2017

| | | |
|--|--|---|
| Abonos Vivos | DOLE | Nintanganga |
| AEME Representaciones Cía. Ltd | ECF Farmsystems | North Dakota State University |
| Agrícola Capriella | El Común | One Acre Fund |
| AGRITEK ACORI Costa Rica S.A. | Fazenda Bodoquena | Orchard Africa |
| AGRORUM S.A. | Finca Exótica | Project Mercy |
| Alborada Do Ouro | Finca La Carrodilla | Proyecto DIFA Alternativas y Actualización A.C. |
| Alexandre Ecodairy Farm | Empresa FITOGAL SL | Red Biocol (Red Colombiana de Energía de la Biomasa) |
| Ameerlaan Growers | Future Farmers | Red BioLac (Red de Biodigestores para Latinoamérica y el Caribe) |
| Associação dos Bananicultores de Corupá (ASBANCO) | Ganadería La Tabla | Reef Doctor Organization |
| BioResources | GAOS Biodynamic Farm | RUFORUM |
| Laos Buffalo Dairy | Grupedsac | Sustainable Harvest International |
| CACEP Chocolates | Grupo Altamore | Stellenbosch University |
| Campo Agropecuario Experimental del Tecnológico de Monterrey, Campus Querétaro (CAE-TEC) | Guangala | Tabafresh |
| Caramba Farms | Hacienda Sur | Tauroa Farm |
| Centro Agronómico Tropical de Investigación y Enseñanza (CATIE) | Heifer International | Tlajij |
| International Center for Tropical Agriculture (CIAT Bolivia) | Holland Orchids | Tuskegee University |
| Clemson University | Hotel Blue Osa | University of Florida |
| Cooperativa Departamental de Caficultores de Risaralda | Instituto Hondureño de Café (IHCAFE) | University of Georgia |
| Corporación San Diego | Inter-American Institute for Cooperation on Agriculture (IICA) | Universidad de Cartagena |
| Corporación La Favorita | International Institute of Tropical Agriculture (IITA) | Universidad Federal de Viçosa |
| Corporación PRO | Instituto Yucateco de Emprendedores (IYEM) | Universidad Tecnológica del Mayap |
| Costa Farms | JPG Resources | UTA (Fundación para la Producción Agropecuaria Tropical Sostenible) |
| Cummins | Kalsec Inc. | Vibrant Village |
| Delaware State University | La Matilde Comarca Biodinámica | Whitesand Ecovillage |
| | Laboratorio de Agricultura de Precisión, Universidad EARTH | Zanmi Agricol |
| | Lakyum Hotel | Zambia Agricultural Research Institute (ZAR) |
| | Martha's Best | |

2018

| | | |
|--|---|---|
| ADRA Zimbabwe | Balaomar S.A. | Cooperativa Agraria Cafetalera "La Prosperidad" |
| Advanced Farm Technologies JA LTD (Martha's Best) | Black Star Farms | Corporación Arrocería Nacional CONARROZ |
| AgriBridge | Cafetal El Equimite | Corporación PRO S.A. |
| Agrícola El Cántaro S.A. | Centre of Excellence in Mycotoxicology and Public Health, Gent University | Costa Nursery Farms, Inc. |
| Agro Norte Pesquisa e Sementes, Ltda. | Centro Agronómico Tropical de Investigación y Enseñanza (CATIE) | Del Mar Academy |
| Alexis Mejía Representaciones Cía, Ltda. | Centro de Investigación Científica de Yucatán A.C. | Delaware State University |
| ALIA2 S.A. | Centro del Agua para América Latina y el Caribe / Instituto Tecnológico y de Estudios Superiores de Monterrey | Earth Island - Follow your Heart |
| Allegro Coffee Company / COOPRONARANJO RL | Cicalares S.A. | Ecole Normale Supérieure, Laboratoire de Géologie de l'Ens |
| ARQUEOL S.A. | Citrofrut (Grupo Citrofrut S.A. de C.V) | El Colegio de la Frontera Sur (ECOSUR) |
| Asociación Cámara de Ganaderos de Nicoya | Compañía Palma Tica S.A. División Atlántico | El Hombre Sobre la Tierra A.C. |
| Asociación de Apicultores de San Pedro de Vilcabamba | COOPEAGRI RL | EMRO |
| | | Escola Comunitária Casa Familiar Rural de Senador José Porfirio |

Ethiopian Agricultural Transformation Agency (ATA)
 Ethiopian Institute of Agriculture Research (EIAR)
 Fundación Salva Terra
 Ganadera La Delia S.A. GANADELIA
 Ganadera Moreno
 GAOS Biodynamic Farm
 Genética Boa Fe / GBF Global Ltda.
 Glenspear Partners Pty Ltd. (Meredith Dairy)
 Granja Alternativa
 Grupo Agroindustrial Tres Jotas
 Grupo Industrial CACEP
 Grupo Investigación LPF - TAGRALIA
 Universidad Politécnica de Madrid
 Hacienda Las Lajas
 IHSM La Mayora CSIC-UMA
 Ingenio Taboga
 Inmobiliaria Guangala S.A.
 Instituto Yucateco de Emprendedores (IYEM)
 Inter-American Institute for Cooperation on Agriculture (IICA)
 International Institute of Tropical Agriculture (IITA)
 Iowa State University

Instituto de Investigación y Tecnología Agroalimentarias (IRTA)
 Island Organics
 Justin Gold
 Kalsec Inc.
 Laos Buffalo Dairy
 Las Nubes Natural Energy Resort
 Leventis Foundation (Nigeria) LTD
 LOGBAN SA, (DOLE)
 Logística Bananera S.A., DOLE
 Molod'a Organica'a
 Nasho Irrigation Project
 Nintang SA
 Nordic Approach AS
 North Dakota State University
 Patronato Pro Zona Mazahua A.C.
 Perma Matrix
 Project Concern International
 Promotora Orgánica de Colima, SAPI de C.V.
 Proyecto DIFA, Alternativas y Actualización, A.C.
 Reserva Conchal S.A.
 Rincón de la Vieja SRL (Hacienda Guachipelin)
 Secondary Education for Girls' Advancement

Secretaría de Agricultura, Ganadería, Desarrollo Rural, Pesca y Alimentación. SAGARPA. Delegación Chiapas.
 Semillas Harris Morán Mexicana S.A. de C.V.
 Servicios Forrajeros
 Share The Harvest Farm Inc.
 Sierra Biological Inc.
 Sociedad Agrícola e Industrial San Carlos S.A.
 Sociedad Manríquez e Hijos y Cía. Ltda
 Stellenbosch University
 Sustainable Harvest International
 The Leatherback Trust
 The University of Georgia
 Tradeline Corporation Group Limited
 Trans American Aquaculture LCC
 Tuskegee University
 Unión de Productores Maya Vinic SC de RL de C.V.
 University of Cape Town
 University of Florida
 Visayas State University
 Vitivinícola del Morro S.A.
 Walmart Centroamerica
 Zambia Agriculture Research Institute (ZARI)



“Working in organic agriculture centered around agroecology and soil health was a great leap in my understanding of all of the diverse ways one can produce food and medicine for a community. The farm I was on, Molod'a Organica'a, is an immensely diversified, USDA certified, organic family farm. We produced around 100 vegetable and herbaceous crops in constant rotation with each respective cropping cycle to work with nutrient cycling and pest/disease suppression and with around 50 different tropical fruits for 6 local farmers' markets per week. I was involved in the Hawaii Farmers Union and other community projects such as the Kauai Food Forest, and attended various conferences and local radio shows to speak about EARTH University and share my personal experiences. It was a truly complete experience where I learned something from all of the different people I met during these four months, from farmers to artists, scientists to ukulele players; this network of wonderful humans is what I cherish most.”

**Malcolm Porteus ('19, Costa Rica)
 Kauai, Hawaii, USA**

OUR BOARDS AND SENIOR LEADERSHIP*

EARTH University Board of Directors

Tim Solso, President
Alan Kelso, Vice President
Pedro León, Secretary
Ana Regina Aguirre De Riojas
Anne Slaughter Andrew
Bobby Moser
Dele Olojede
Franklin Chang-Díaz
Francis Durman
Marisa Brenninkmeyer
Mark Brouse

Emeriti

† Eduardo King Carr
† Glen Taggart
† Hernán Fonseca
† Jorge Manuel Dengo O.
† José Elías Sánchez
† Luis Alberto Monge
† Norman A. Brown
† Rodolfo Cortés R.
Salvador Alemany

EARTH University Foundation Board of Trustees

Mark S. Brouse, President
Mark McGahan, Treasurer
Kent B. Alexander, Secretary
Adrienne Meisel
Claire “Yum” Arnold
Erika González-Akre
Gustavo Manrique
Ian Davidson
Jane C. Black
Joshua Arnow
Lynn Hoffman-Brouse
Mark Ohrstrom
Michael Besançon
Ross Arnold

Emeriti

Charlotte S. Metcalf
Samuel Kaymen

EARTH University Board of Trustees

Alan Kelso
Anne Slaughter Andrew
Francis Durman
Mark Brouse
Tim Solso

Executive Team

Arturo Condo, President
Yanine Chan, Dean and VP of Academic Affairs
Manuel Ramírez, Vice President of Development
Meredith Rentz, Executive Director of the EARTH University Foundation
Emily Fintel Kaiser, Acting Executive Director of EARTH Futures and Strategic Advisor to the President
Patricia Loría, Vice President of Finance
Ramón González, Vice President of Operations
Alexa Glo, Director of the President’s Office and Board Relations

Our Faculty

Our faculty are recognized around the globe as experts in tropical agriculture, sustainable rural development and leadership education.

- 40 professors from 18 countries
- 59% hold a Ph.D.; 41% a Masters
- Nearly 40% have been teaching at EARTH for 10 years or more

*At the end of 2018



TOGETHER,
WE ARE GROWING EARTH'S IMPACT
TO BUILD VIBRANT, SUSTAINABLE
RURAL AREAS FOR A THRIVING WORLD.

THANK YOU.

Give, Learn, Engage:

www.earth.ac.cr

 [@EARTH_Uni](https://twitter.com/EARTH_Uni)

 [/EARTHUniversity](https://www.facebook.com/EARTHUniversity)

 [@u_earth](https://www.instagram.com/u_earth)

EARTH University
P.O. Box 4442-1000
San José, Costa Rica
Phone: +506 2713-0000

EARTH University Foundation
151 Ellis St NE, Floor 1, Suite 133
Atlanta, GA 30303
Phone: +1 404 995-1230